

PRESENTATION

ON

TABULATION OF MARKS FOR CLASS X
BOARD EXAM 2021 BASED ON THE
INTERNAL ASSESSMENTS CONDUCTED
BY SCHOOLS

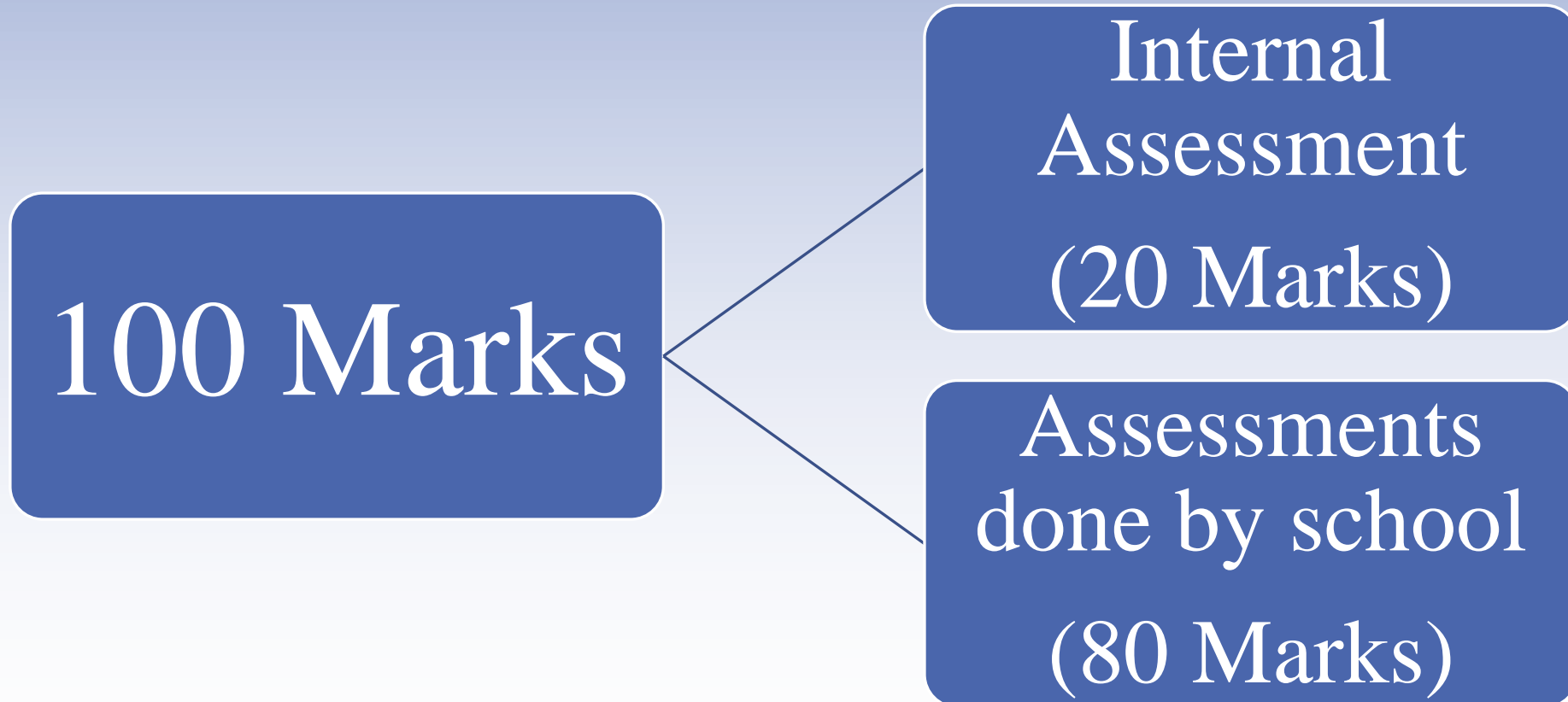
BACKGROUND

- Due to increase in number of COVID 19 cases, CBSE had cancelled the Board Exams for Class X which were to be held from 4th May to 7th June 2021.
- The results of Class X have to be prepared on the basis of an objective criterion developed by Board
- Any Parent or candidate who is not satisfied with the allocated marks can appear in Board Examination as and when conditions are conducive to hold the exams.

OBJECTIVE OF THE POLICY

- Developing an unbiased and transparent academic record based on realistic evaluation of the academic performance of the students.
- Following the four key principles of any evaluation namely – **Reliability, Fairness, Flexibility and Validity.**
- In order to ensure the principles, School leaders and Teachers should ensure that the evaluation process is clearly understood by all stakeholders.

BIFURCATION of maximum 100 Marks for each subject.



INTERNAL ASSESSMENT (20 Marks)

TYPE OF ASSESSMENT	Subject Enrichment	Multiple Assessment	Average of best of PT1/PT2/PT3	Portfolio	Total
MARKS ALLOCATED	5 Marks	5 Marks	5 Marks	5 Marks	20 Marks

If any school has not conducted any of the assessments mentioned above then they can conduct Online Assessments such as Quizzes, Presentations, Portfolios

The last date for uploading of Internal Assessment marks on CBSE Portal is 11 June 2021

EXTERNAL ASSESSMENT (80 Marks)

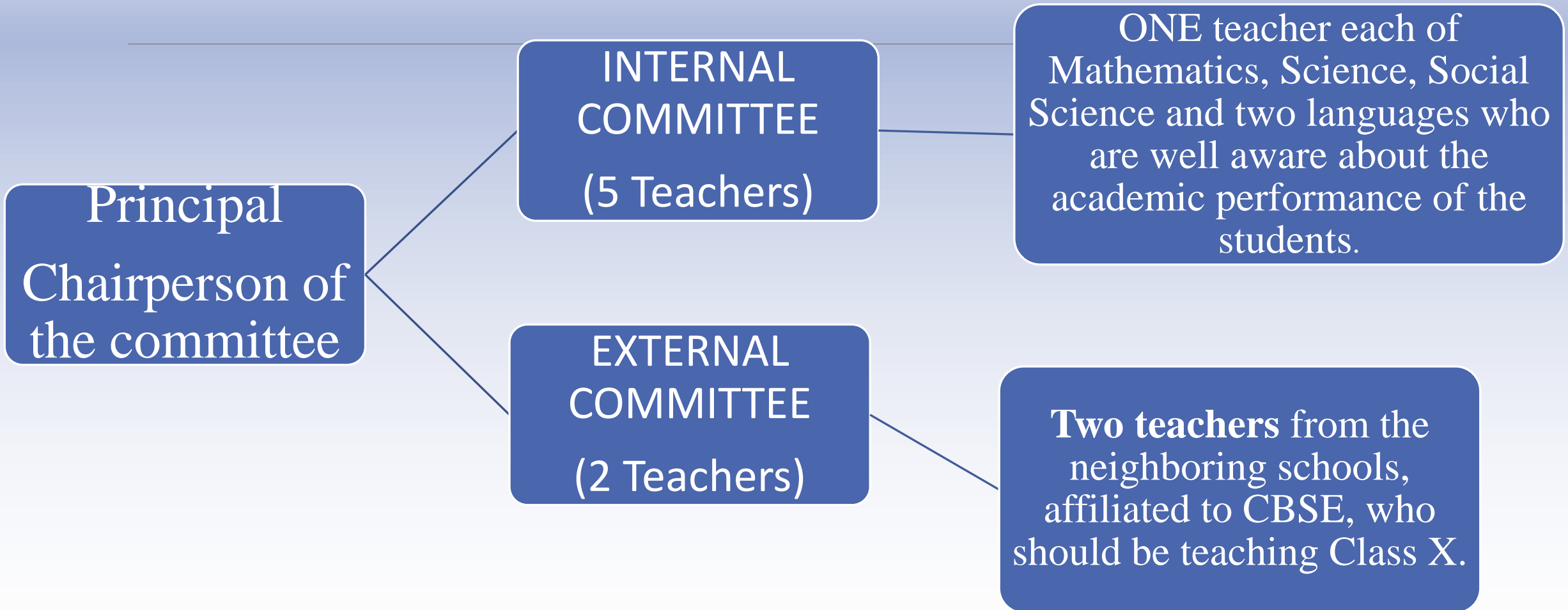
Category of Tests/Exams	Maximum Marks
Periodic Test-1/Unit Test	10 Marks
Periodic Test – 2/Half Yearly/Mid Term Examinations	30 Marks
Pre- Board Examinations	40 Marks
Total	80 Marks

•In Case the school has conducted more than one test or exam with in each category, then weightage/average or the best performance in the three tests can be considered.

For Example : If a school has conducted three preboard exams then it may decide to take an average of the three exam or the best out of the three or give weightage to each exam.

If the school has not conducted one or more of the three categories mentioned or differences in online/offline mode then the committee has to decide a criteria and mention the rationale document (annexure -2)

CONSTITUTION OF RESULT COMMITTEE(8 Members)



RULES OF CONSTITUTION OF COMMITTEE (ANNEXURE 1)

- No interchange of teachers as committee members between two schools.
- Teachers should not be from the same management school or any other relationship which may influence the result.
- Ward(s) of the committee members should not be appearing from the school.
- CBSE may also appoint two external members in the committee.
- External teachers will be paid a fixed honorarium of Rs. 2500/- per person and Internal committee members will be paid Rs 1500/- per person which will be remitted directly into the accounts.
- Proceedings and all decisions made should be recorded in Rationale document and should be kept confidential.

For Example : IF ITL school appoints external committee teachers from Indian Heights then Indian Heights will not appoint teachers from ITL but may appoint from Venkateshwara or any other school in the neighborhood.

ASSESSMENT STANDARDISATION

REFERENCE YEAR

- Every school will have a reference year which has the highest overall performance in the previous three years board examination.
- In case data is available only for two years, then the best performance out of the two years, for only one year, the same will be taken.
- For the first timers, the board will provide the details

For example :

Overall average for

2017-2018 is 72%

2018-2019 is 74%

2019-2020 is 71%

Reference year will be 2018-2019 is 74%(highest)

CBSE will provide an online details of school wise reference year marks.

ASSESSMENT STANDARDISATION

- The overall average marks for the school assessed in 2021, for all the 5 main subjects, should not exceed the overall average marks obtained by the school in the reference year.
- The subject wise marks assessed by the school for 2021 should be within a range of ± 2 marks obtained by the school in the subject in the reference year.

For example: If the average marks obtained in the reference year for Mathematics was 62 then the average marks assessed in Mathematics for 2021 should be between 60 and 64(± 2)

ASSESSMENT STANDARDISATION

If any CANDIDATE(s) has not appeared in any Assessment, then the school may conduct offline/online or telephonic one to one assessment and record evidences.

If any CANDIDATE(s) with benchmark disability has not appeared in any of the assessments conducted by school, then the school may consider other activities such as Portfolio, Presentations, Project, Quiz, Oral Test etc. and record evidences.

RESULT OF MORE THAN 5 subjects

In case a student has offered different subjects other than the 5 major ones i.e painting , music etc or offered more than 5 subjects, then the mean marks of the best 3 subjects out of maximum allotted marks may be awarded.

Finalization and Uploading of Marks

- An online system will check whether the marks allotted by the school are in conformity with the reference year.
- The school will be able to finalize the marks on the boards portal only if the uploaded school-based assessment marks are consistent with the Boards policy and directives.
- In case of any inconsistency, schools will not be able to upload the marks and the committee should revise the marks.
- **DATA ONCE UPLOADED WILL BE FINAL**

RECORDING OF EVIDENCE AND ASSESSMENT

- The evidence towards the performance of the students in the internal tests/exams conducted by the school should be documented student-wise and maintained in a secure manner, which may be called upon for subsequent verification as per the instructions of the Board.

SAFE KEEPING OF RECORDS

- All the student's records along with the Rationale Document should be kept in safe custody by the Principal of the school for subsequent verification by a team deputed by CBSE.

COMPARTMENT CATEGORY

- In case any student, even after application of grace marks, is unable to meet the qualifying criteria, he or she may fall in “Essential Repeat or Compartment Category”.
- For such candidates school shall conduct an objective type compartment exam (offline/online) based on sample paper and upload marks for final result.
- Student shall be allowed to continue in Class XI till declaration of the compartment result by CBSE.

CBSE Support to Schools

- Webinar
- FAQs will be uploaded on the website.
- In case of any observations/ clarifications, the schools may send their queries to their City Coordinator
- Online details of school wise reference year marks
- Provision to confirm whether the assessment is as per board policy
- Grace marks after the final uploading of marks.

Information Regarding Class XI

- NO POLICY OF VERIFICATION/
PHOTOCOPY OF ANSWER BOOKS or
REVALUATION
- STUDENTS who have opted for
Mathematics (Basic) in Class X are
permitted to take Mathematics in Class XI.

Action Against Non Compliance

CBSE reserves the right to

- Start dis affiliating proceedings
- Impose financial penalty against the school
- Not to declare the class X result for that school till the time it is not in conformity with the board

TIME SCHEDULE (Annexure -4)

Sl. No.	Activity	Last Date*
1.	Formation of Result Committee by school	05 th May, 2021
2.	Provision of subject wise, school wise distribution of marks as per previous Board exams by CBSE	10 th May, 2021
3.	Finalisation of Rationale Document	10 th May, 2021
4.	Conduct of assessment, if any	15 th May, 2021
5.	Availability of Portal for uploading of marks	20 th May, 2021
6.	Finalization of result by schools	25 th May, 2021
7.	Checking & moderation of marks by schools	28 th May, 2021
8.	Submission of marks to CBSE	5 th June, 2021
9.	Submission of internal assessment marks (out of 20)	11 th June, 2021
10.	Declaration of result by CBSE	20 th June, 2021

IMPORTANT ANNEXURES

ANNEXURE 1 – Rules for constitution of Committee, their role and Responsibilities

ANNEXURE 2- Rationale Document

ANNEXURE 3- Illustrative Example for Internal Moderation of Marks

ANNEXURE 4 – Time Schedule



Thank
you

